



ORTHOscan

IMAGING EXCELLENCE



ORTHOscan HD
WITH FLAT DETECTOR

THE FIRST MINI C-ARM WITH A FLAT DETECTOR

EXCEPTIONAL IMAGE QUALITY

Increased gray-scale improves diagnostic accuracy

ENHANCED RELIABILITY

Fewer components leads to less probability of failure

OPTIMIZED FORM FACTOR

Small, thin design affords maximum maneuverability

ADJUSTMENT FREE IMAGING

Automatically adjusts to metal, motion, and varying anatomy

BETTER DOSE UTILIZATION

Superior image quality for a given dose

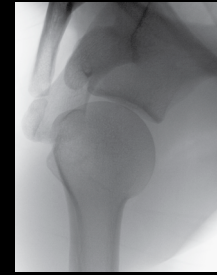
SURGEON DRIVEN DESIGN

Enabling optimal image quality with minimal effort



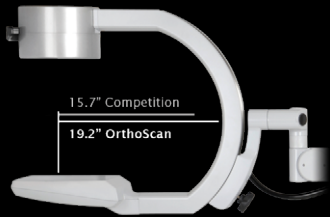
FLAT DETECTOR

Slim profile of the flat detector provides additional positioning options for better patient access



BOOST IMAGING MODE

Enables the ability to image larger anatomy such as large shoulders and knees



GREATEST ARC DEPTH

Offers an arc depth of 19.2", a 22% greater arc depth than the competition



HEIGHT ADJUSTABLE MONITOR

The only height adjustable monitor on a mini c-arm with the greatest horizontal range



STERILE FIELD CONTROLS

Imaging and documentation functions include a 4" and 6" field of view and laser



INFRARED FOOTSWITCH

Multi-function cordless footswitch for imaging and documentation

DOCUMENTATION

- DICOM 3.0 compliant (send, store, print, modality worklist)
- Two printer options
- Wireless communication
- USB memory stick
- EMR Image Link
- Cine Loop Export